

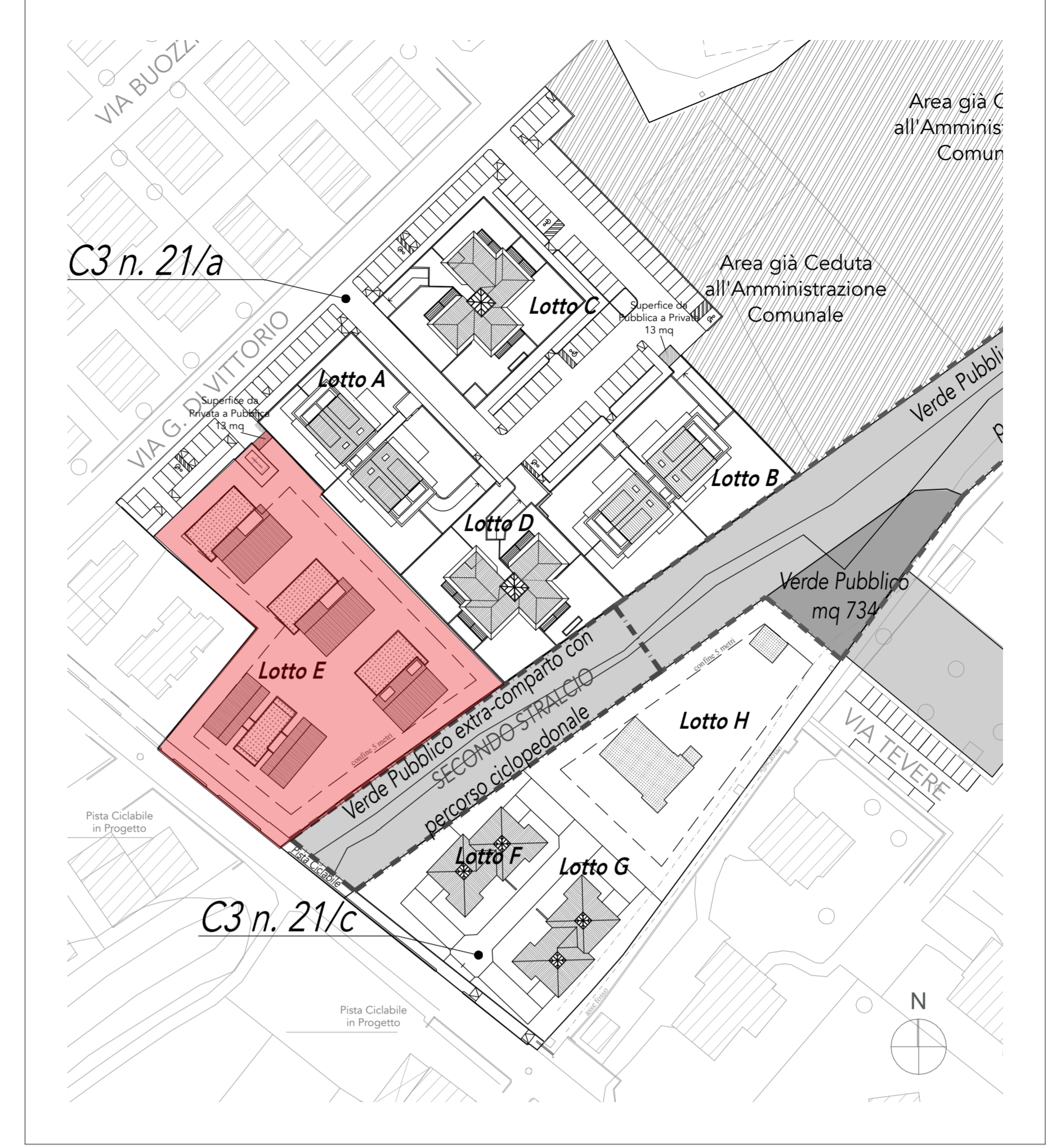
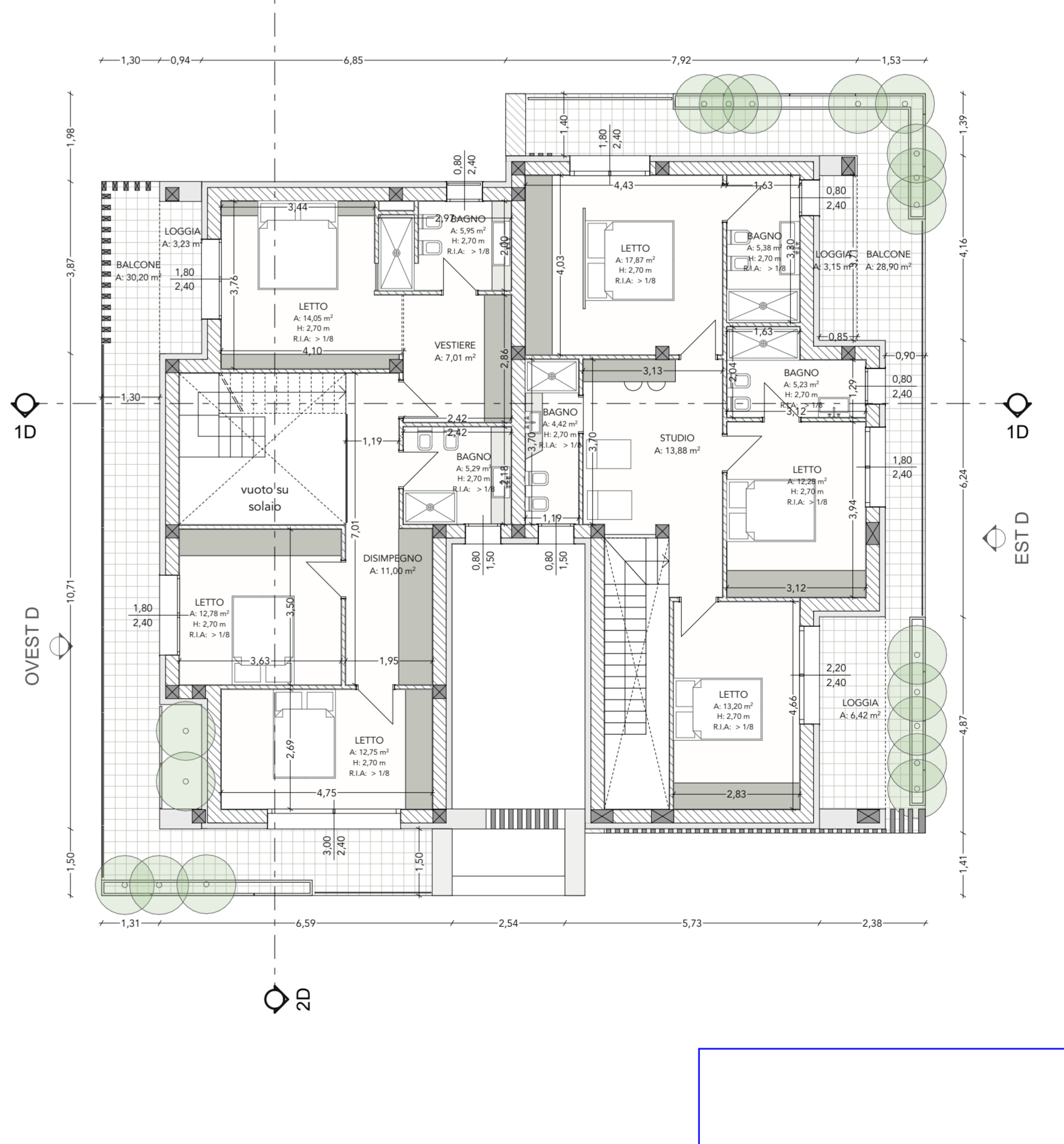
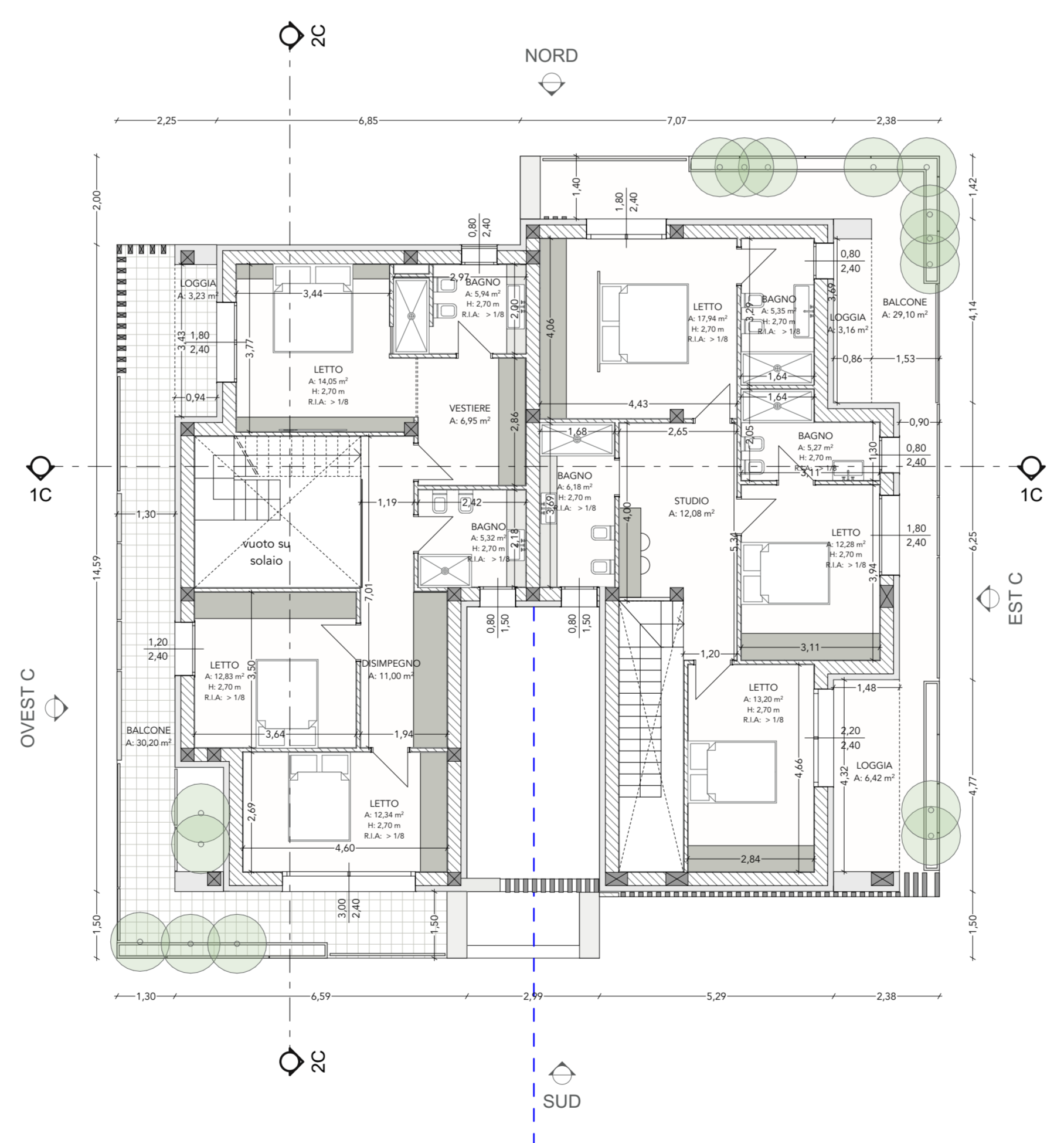
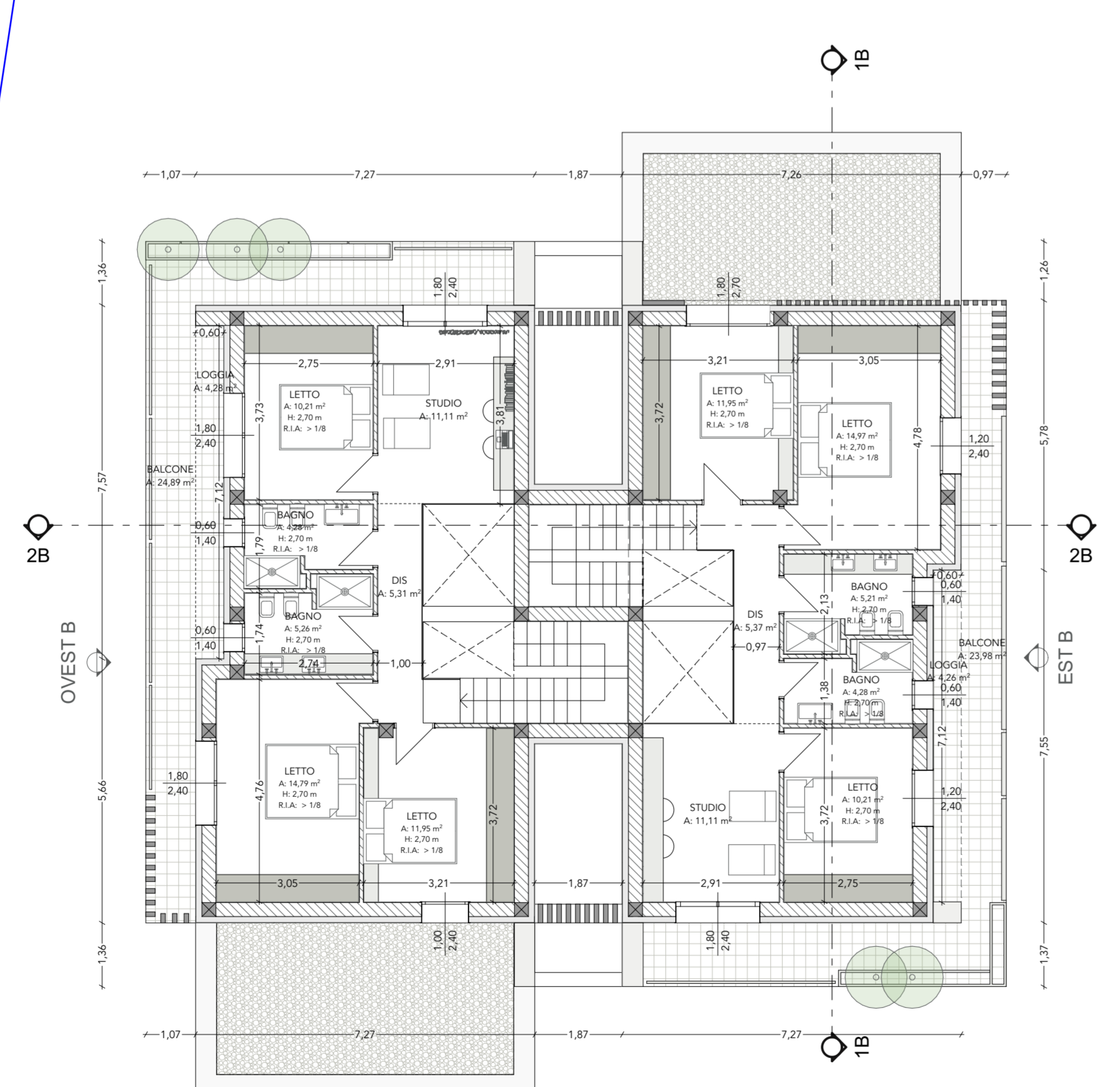
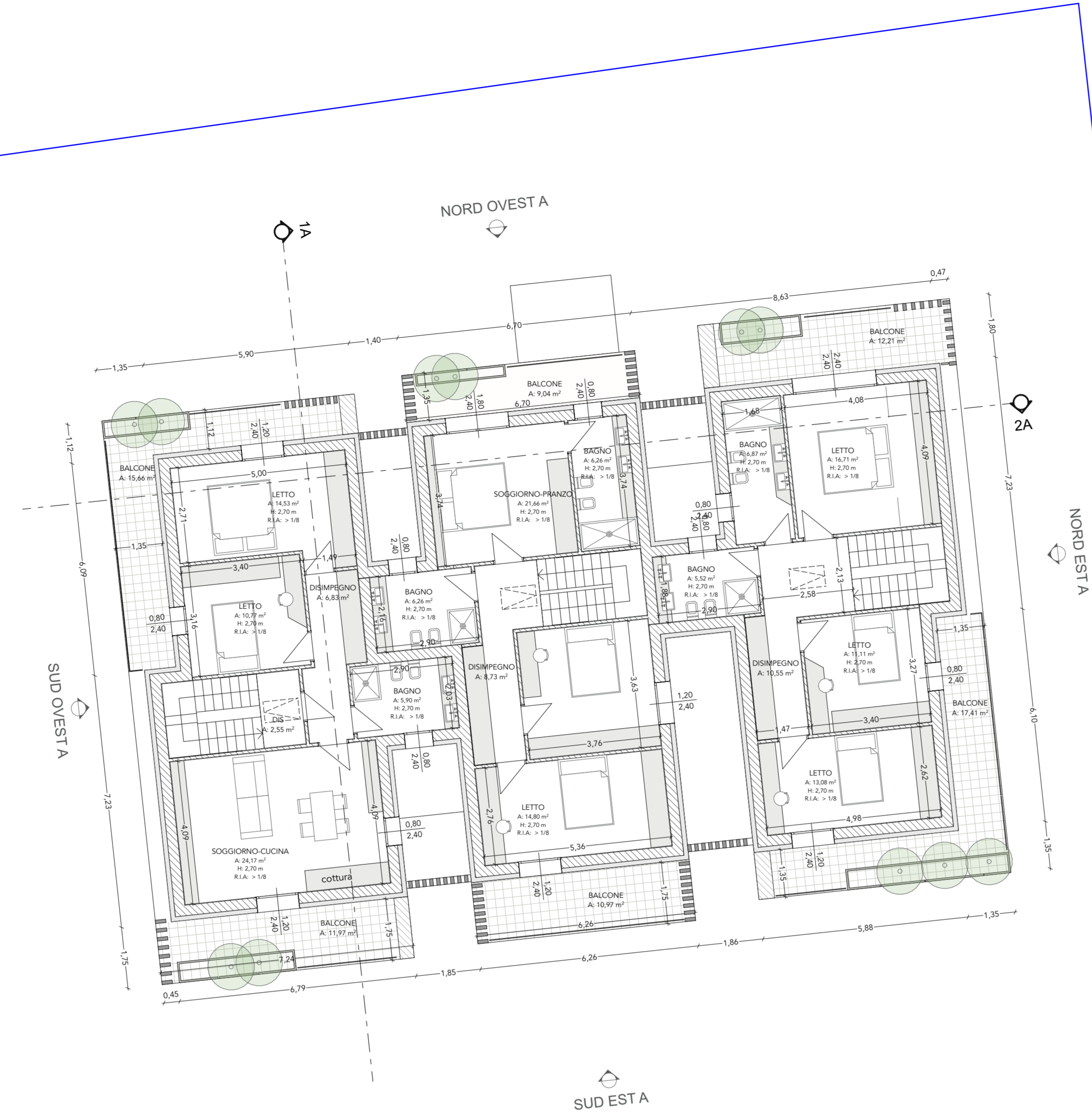
OGGETTO:
VARIANTE AL PIANO PARTICOLAREGGIATO DI INIZIATIVA PRIVATA
DEL COMPARTO C3 N.21/a - C3 N.21/b - C3 N.21/c
Fg 20 part.le 836, 1250, 2564, 2543, 2565, 2351, 2363, 2364,
2365, 2366, 2367, 2349
EXTRA COMPARTO - Area demaniale ex ferrovia Sant.-Urbino
Fg 20 part.le 87-91-89 in parte
SVILUPPO TIPOLOGIA EDILIZIA LOTTO E
RESIDENZA TURISTICO ALBERGHIERA

TAVOLA:
TAV 3 - PIANTA PIANO PRIMO

AGGIORNAMENTO:
29/03/23

PROGETTISTI:
ARCH. GABRIELE FORNARI

PROPRIETA':
FOREVER HOUSE S.R.L.



geolocalizzazione scala 1:1000

